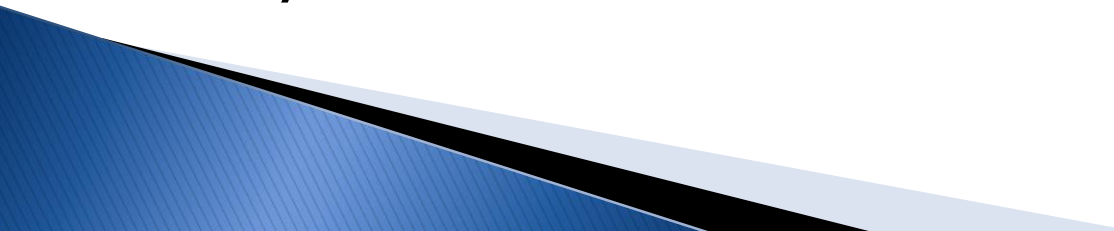


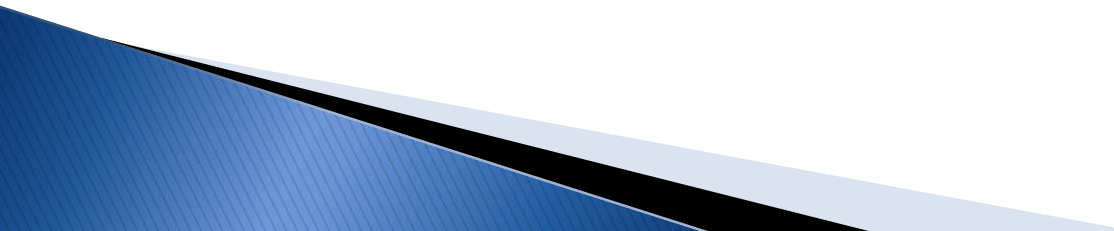
# East Lancashire Hospitals NHS Trust

## Application for Foundation Trust Status

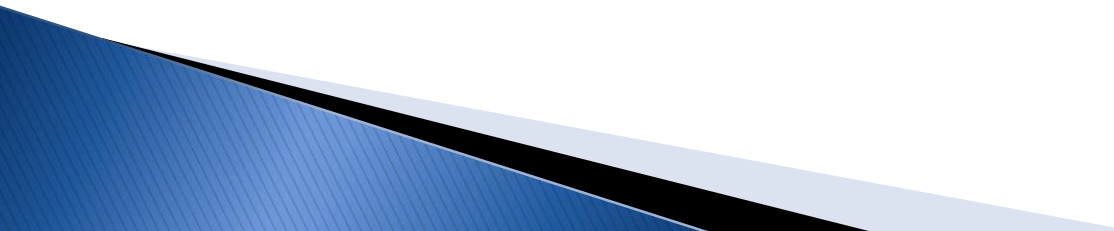
# Key Learning Points

- ▶ What is a Foundation Trust?
  - ▶ Why should we become one?
  - ▶ What the Regulator (Monitor) looks for
  - ▶ How will we operate?
  - ▶ The Integrated Business Plan
  - ▶ Key dates
- 

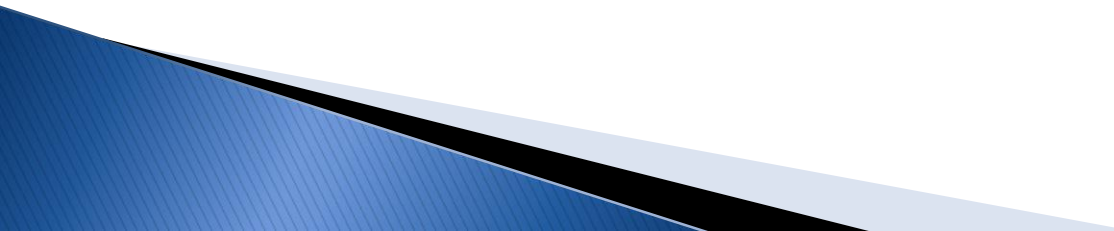
# What is a Foundation Trust

- ▶ Independent, public benefit organisation, free from central government control
  - ▶ Locally Represented
  - ▶ Providers of healthcare according to core NHS Principles
- 

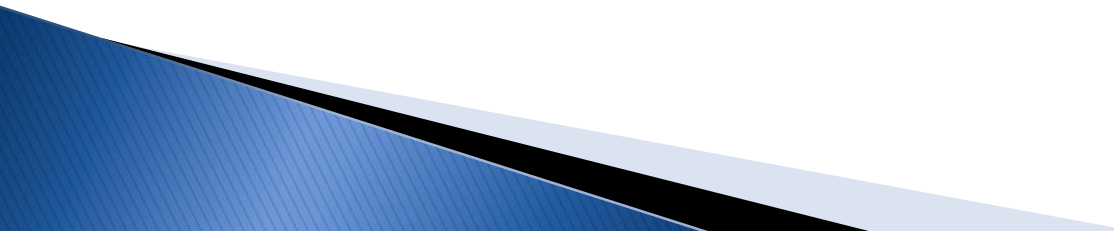
# Why should we become a Foundation Trust

- ▶ Organisational development not process
  - ▶ We must go through the application process to be authorised
  - ▶ We must continue to change how we work as an FT and be an even better provider of health care services
- 

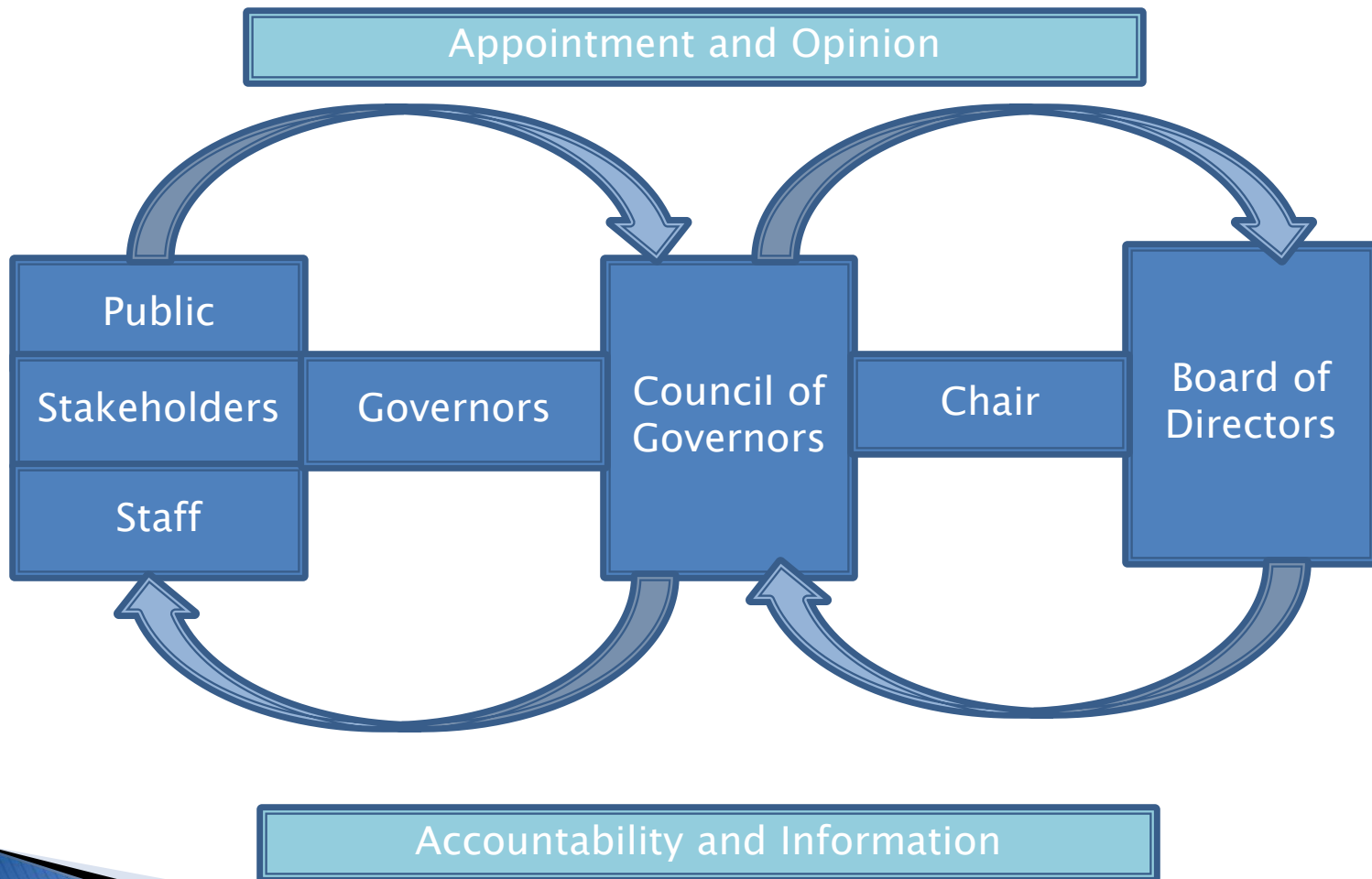
# What the Regulator (Monitor) looks for

- ▶ Legally constituted
  - ▶ Well governed
  - ▶ Financially viable
  - ▶ Quality of services
  - ▶ Robust service delivery plans
  - ▶ Representative of local population and local health, education and social care partners
- 

# What are Monitor looking for?

- ▶ Is the Board capable of operating this organisation as an autonomous Foundation Trust?
  - ▶ Is this a financially sustainable organisation which is focused on the quality of care it provides?
- 

# How we will operate as a Foundation Trust

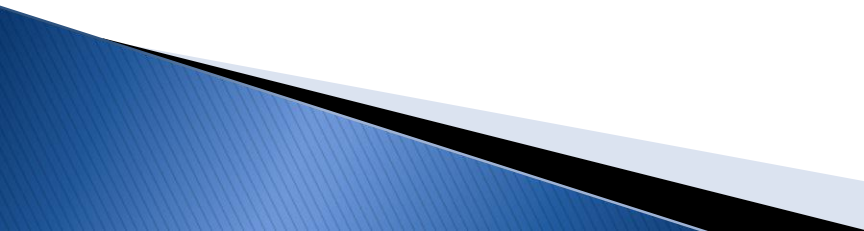


# How we will operate as a Foundation Trust

Public Governors	Staff Governors	Stakeholder Governors
Blackburn with Darwen (3)	Medical and Dental (1)	Commissioners (2)
Burnley (2)	Nursing, Midwives & Health Visitors (2)	Local Authorities (2)
Pendle (3)	Scientific, Therapeutic & Technical (1)	Education Providers (1)
Rosendale (2)	Healthcare Assistants & Support Staff (1)	Third Sector Organisations (1)
Ribble Valley (2)	Managers & Senior Managers , Volunteers & Others (1)	
Hyndburn (2)	Administration & Estates (2)	
Rest of England (1)		



# GOVERNORS

- Majority elected by members
  - Represent members' interests
  - Appoint/remove chair and non-executive directors
  - Decide the remuneration and allowances and terms & conditions of office of chair and non-executive directors
  - Approve appointment of Chief Executive
  - Appoint/Remove External Auditor
  - Receive Annual Accounts plus auditor's report and Annual Report
  - Approve the Forward Plans of the Trust
- 

# IBP

## Key Themes/Golden Threads

- ▶ Strong Quality theme throughout the document
  - Patient Quality drives the Clinical Strategy
- ▶ Delivering the benefits of an Integrated Healthcare Provider
  - Patient Pathways
  - Virtual Ward
  - Intermediate Care



# IBP

- ▶ Ambition, but realistic ambition
- ▶ Not assuming significant growth in activity/income
- ▶ Key Service Developments
  - Repatriation of Orthopaedic activity
  - Provision of Urgent Care
  - Pathology
  - Vascular Centre
  - Intermediate Care
  - Obstetrics
  - Oncology

# EAST LANCASHIRE HOSPITALS NHS TRUST FT TIMELINE 2012-2013

## PUBLIC CONSULTATION



\*IBP – Integrated Business Plan

\*Secretary of State